



FONTAINE DESIGN GROUP

Marae



MARAE is available for inspection in Newport R.I. beginning on Labor Day weekend. MARAE is a 110' Ted Fontaine design built by Alloy Yachts in New Zealand. She has just recently completed a substantial \$4mm+ refit in July of 2020 at the renown Orams Shipyard in New Zealand during which she completed her Lloyd's Registry 15 Year Survey. Three guest cabins sleep eight with four in crew. \$6,700,000.00

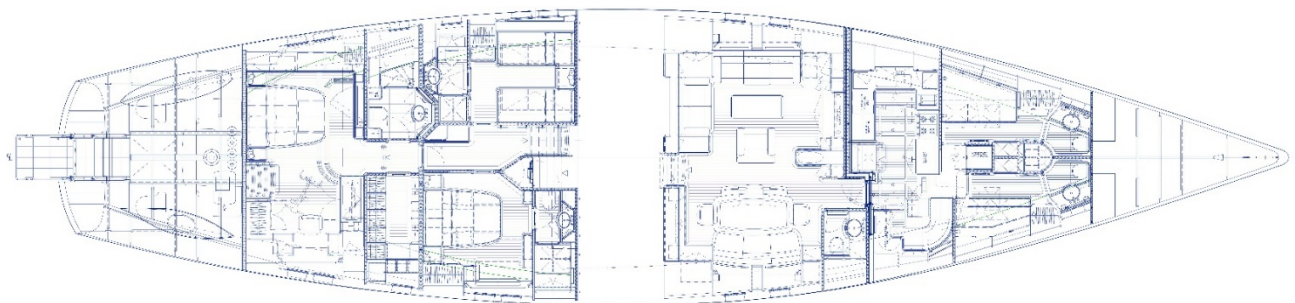


Specifications

- | | |
|------------------------------------|-----------------------------|
| • Cruising Speed: 10 kn. | • Displacement: 368,000 lb. |
| • Maximum Speed: 12 kn. | • Fuel Tank: 3566 Gal. |
| • Beam: 26' 2" | • Fresh Water: 1900 Gal. |
| • Hull Material: Aluminum | • Holding: 740 Gal. |
| • Shoal /Max Draft: 7'-6" / 18' 8" | • Cabins / Heads: 5 / 6 |

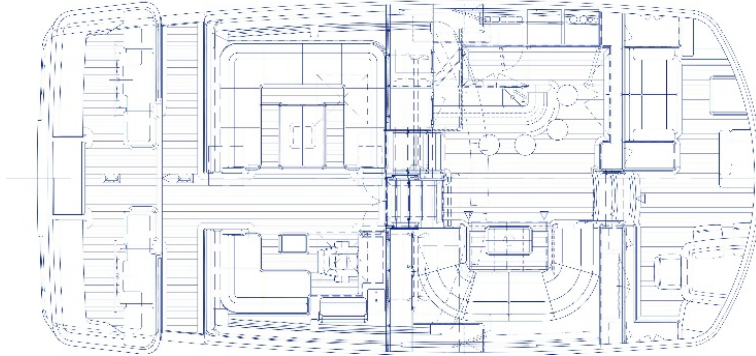
Marae Yacht Description

MARAE is a 108' Alloy Sailing Yacht built in 2004. Timeless Ted Fontaine design, beautifully built by Alloy Yachts. She's just completed a substantial \$4mm+ refit in July 2020 at the Orams Shipyard in New Zealand. Freshly completed Lloyd's Registry 15 Year Survey. 3 -Staterooms sleep 8 + 4 crew.



Accommodations

Marae offers three staterooms for the Owner and guests, a full beam lower salon with formal dining table, and upper salon housing a bar and seating area, and an climate controlled pilothouse which can be converted to an open air space. Marae has multiple seating areas exterior, including the pilothouse, helm seating area and an aft cockpit for sun lounging. The interior is teak and walnut with showcased crystal. Interior furniture all reupholstered 2019.



Pilothouse

This lovely space has a table for comfortable seating 6 for meals while enjoying elevated 360-degree views. This space has heating and air conditioning or can be quickly converted to an open-air space.



Pilothouse with Navigation to starboard and dining area to port.



Pilothouse convertible dining area, table lowers converting to lounge area.

Upper Salon

From the pilothouse, one will next enter the upper salon with a full bar to port. The bar is beautifully finished teak and mahogany, with walnut leather bar stools. This bar area offers an elevated view out the cabin top viewing windows. Behind the bar is a wine chiller, two drink refrigerators and an ice maker. Across from the bar is a lounge area with a cocktail table and wrap around leather seating.



Upper salon with full bar to port and settee to starboard, open to lower salon.

Lower Salon

Step down a half level into the lower salon where you will find a formal dining area on the starboard side comfortably seating 6. On port you will find a comfortable seating area including a couch, love seat and armchair surrounding an inlaid teak and walnut coffee table. A television raises from the cabinetry. Marae is equipped with Crestron entertainment control, which interfaces apple TV, DVD, Video Games, Apple Airplay, Blue Tooth audio. Sound is output in multiple zones (Aft Cockpit, Helm Stations, Pilothouse, Bar, Lower Salon) and uses Denon amplifier with Bose surround sound indoors and Fusion sound outdoors.



Lower salon with dining and lounge area.



Galley

Located forward of the Salon/dining area is access to the galley and crew mess. Crew mess upon entry has galley to port with deep freezer, spacious under floor refrigerator/ freezer, and stand-up refrigerator freezer combination. Crew dinette on starboard.



Crew Quarters

Forward of the Galley there are two cabins with two single berths each. Cabins have dedicated heads and shared shower arrangement.

Owner and Guest Accommodations

The owner and guest staterooms are in the desirable area aft, served by a central corridor from the upper salon.

Master Stateroom

The full beam master provides a full walk around queen bed to port, with a settee to starboard. Double door closet in the master cabin provides hanging locker space, but master suite also includes a walk-in cedar and walnut trimmed closet. Cabinets provide additional storage. Master stateroom has its own companionway providing access to an aft cockpit. A spacious ensuite head boasts a spacious marble shower.



Master cabin aft with companionway out to private aft cockpit.



Master bath with sauna / shower.



Master cabin walk in closet.

Guest Staterooms

On either side of the central corridor from the upper salon are two guest staterooms. To starboard is a queen bed stateroom complete with hanging locker, bureau and ensuite head with stall shower.

Opposite on port, the guest stateroom features side by side single beds, hanging locker and ensuite head with stall shower. There are also two additional pullman berths in this cabin.



Guest cabin with queen berth.



Guest cabin with twin berths and pullman berths.

Galley and Laundry Equipment

Miele Microwave/Oven combination

- 6 burner Miele induction stove.
- Miele Oven
- Refrigerator: front-loading deep refrigerator
- Freezer: (1) front-loading and (1) custom under floor freezer
- Wine Chiller, Ice maker, and two drink refrigerators at bar
- 1 drink refrigerator in pilothouse
- Laundry Equipment:
 - Miele washer
 - Miele dryer

Sails / Rigging

- Carbon mast and boom by Southern, headstay and staysail with carbon sections.
- Main mast is 4-spreader keel-stepped with jacking system with Air Draft of 148'
- In boom furling by Southern Spars
- Carbon fiber roller furling with hydraulic motor on forward end.
- Spinnaker and tender lift poles in Carbon with aluminum fittings
- BSI stainless steel rod new 2020
- Kevlar runners new 2020 with Dyneema Spectra cordage (replaced 2018/2020)



Winches and Sailing Gear:

- Reckmann hydraulic furlers on headstay and staysail rebuilt 2020.
- 2 Harken 1120st 3 speed hydraulic self-tailing
- 2 Harken 74.3 3 speed hydraulic self-tailing
- 1 Harken 980.3 2 speed with back wind hydraulic self-tailing
- Sails: Doyle NZ Stratis Carbon / Vectran
- Mainsail: (New in 2019)
- Genoa: (New in 2018)
- Staysail: (New in 2018)
- Gennaker/ Asymmetrical Spinnaker: (New 2020)

Engines / Machinery

- Main Engine: 2 x Luger – 6108 300 hp (223 kw)
- Engine Hours: 18 hrs. Full Rebuild March 2020
- Transmissions: 2 x ZF 350 AL, Ratio: 2.917:1 Rebuilt 2020
- Capacities
 - Lube Oil: 31 USG (120 Liters)
 - Waste Oil: 31 USG (120 Liters)
 - Hydraulic Oil: 60 USG (250 Liters)



Electrical

The AC System is 380 volt, 3-phase, 50 hertz and 230-volt single phase

- The DC System is 24 vdc
- Generators: 2 x Northern Lights M=1064D 35kW (2020)
Generator Hours: Approx. 120 ea. Aug. 2020
Note: The generators were replaced new in 2020
- Shore Power Unit: Magnus SP 100, 40 Kva unit- new 2020



Electronics / Navigation

3 x Furuno Nav pilot 711C Auto Pilots new 2020

- Time Zero and Expedition with full world chart folio with 2 licenses
- Computer System: 2 solid state nav computers new 2020.
- Pep wave HD2 dome with external 8 sim receiver new2020
- KHV V7 HTS domed 2020
- 6 17" Hattfield displays in pilot house and helm stations with full switching capabilities between nav computers, radar, CCTV, and PLC vessel monitoring system.
- 4x Furuno FM-4850 VHF radios new 2020
- Furuno Class A AIS, FA 170- new 2020
- 2x WASSP GPS antennas, Axis CCTV masthead with 30x optical zoom 1080p and Axis 1080p which interface with GPS and AIS for augmented reality feature.
- Monitoring and Control: Full upgrade and reprogramming on vessels "Seatouch" PLC monitoring and control system.
- Helm and bridge stations re-designed and panels made new 2020.

- Radar 1: Furuno FAR 1523 BB - Open Array
- Radar 2: Furuno TZT-TZT2 24 in closed array
- Chart plotter: Time Zero
- B&G 7 x Hercules 5000 - displays in pilot house, cockpit, crew mess, crew cabin.
- 2x 20/20 H5000 displays and 2x Triton 2 displays.
- System consists of speed, depth, water and air temp, heel and barometric.
- AIS: Furuno FA-170



Communication Equipment

- VSAT: KVH V7, Iridium: Certus system using Thales Vessel Link for Iridium telephone through PABX system internet via Kerio control system.
- Vessel's internet can pull from Rogue Wave.
- Wi-Fi antenna, Pep wave Cellular, V-sat Ku-band, Iridium internet or hardwired.
- All internet sources controlled through Kerio system traffic rules.
- VHF: 4x Furuno FM4856 VHF in pilot house, helm stations and crew mess.
- All antennas and cabling new 2020.
- CCTV: 2x Fixed Axis Cameras in ER with 1080p, 1 x masthead controllable 30 x optical zoom- viewed through vessel time zero system. Camera interfaces with GPS and AIS for augmented reality AIS overlay on plotter.

Ground Tackle

- Windlass: 2 x Maxwell hydraulic windlasses (rebuilt 2020) with blue tooth remotes each with 120 meters of 14mm stud link chain (chain new in 2020)
- Anchors: 2 x 120 kg stainless steel plow anchors
- Fortress FX125 aluminum (spare anchor)
- Handheld and Bluetooth controls

Safety Equipment

- Fire system: TYCO new 2019
- Fire bells: Engine room, wheelhouse, forward accommodation, aft accommodation, forepeak and lazarette
- Safes: 1 x Owner's Stateroom, 1 x Captain's cabin
- Life Rafts: 1 x 12-man SOLAS "A" Zodiac; 1x 12-man SOLAS "B" Zodiac with current inspection 2020
- Life Preservers: 18 x SOLAS Type A
- Life Rings: 2 x life rings with strobe
- MOB strobe and smoke signal
- Miscellaneous: Personal MOB Packs worn at sea with AIS PLB smoke and hand flares
- 2 x Jon Buoy Man Overboard units
- 2 x EPIRB
- SART
- 2 x sets of SCBA and firefighting bunker gear
- International running lights

Tenders

- Crew Tender: 11. (3.6m) 2019 AB
- 30hp Yamaha Enduro outboard
- Main Tender is a 5.5-meter Custom Tender from Smuggler Marine with a Yamaha 130 HP. Tender is fully outfitted with plotter, Fusion stereo, Custom colored tubes and gelcoat to match mother ship. (New 2020)

Additional Comments

- Marae underwent a substantial refit and 15-year Lloyds Special Survey from Oct 2019-July 2020.
- All machinery spaces were stripped, painted, and rebuilt.
- Domestic plumbing replaced, water tanks opened, cleaned, and repaired for corrosion, black/grey water tank were rebuilt.
- Fire/bilge valves rebuilt.
- Engine room ventilation fans rebuilt / replaced.
- Water maker rebuilt.
- Air- Conditioning plant (Condaria - new 2020), all air handlers replaced.
- Fuel, oil and waste oil transfer pumps rebuilt.
- Hundestadt VP propeller gearboxes rebuilt.
- Emergency batteries, Service batteries and Radio batteries replaced.
- Pneumatic system rebuilt.

- Two compressors rebuilt.
- Kobelt throttle control system rebuilt.
- Shore Power Unit: Magnus SP 100, 40 Kva unit - (2020)
- Exhaust system fully refurbished engine to outlet, including new exhaust lagging covers (2020)

Hydraulics

The system is a custom Alloy Yachts ring main using stainless steel tubing and Danfoss valve blocks with manual handles.

- Pumps:
 - 2 x 100 cc Rexroth - one off each main engine (rebuilt 2020)
 - 2 x 45 cc - one off each generator (rebuilt 2020)
 - 1 x 28cc - 7.5 kW AC electric motor
- Bow Thruster built 2020.
- Stern Thruster replaced 2020.
- 2 x Maxwell Windlasses fully rebuilt by manufacturer 2020.
- 5 x Nilsson Captive reel winches fully and extensively rebuilt by manufacturer.
- Hydraulic Boom Vang rebuilt 2020.
- 5 x Harken hydraulic winch motors rebuilt / replaced.
- Reckmann mainsail furler rebuilt.

PRINCIPAL DIMENSIONS		
Length Over All	100'-2"	32.97 m
Length at Water Line	83'-2"	25.96 m
Beam Max	26'-2"	8.00 m
Depth (deck to keel)	7'-7 1/2" @	2.32 m @ 7.72 m
Displacement	300,000 lbs	136,000 kg
Righting Moment (1 g)	45,000 ft-lb	1,955 kg-m

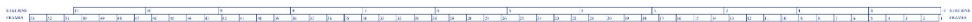
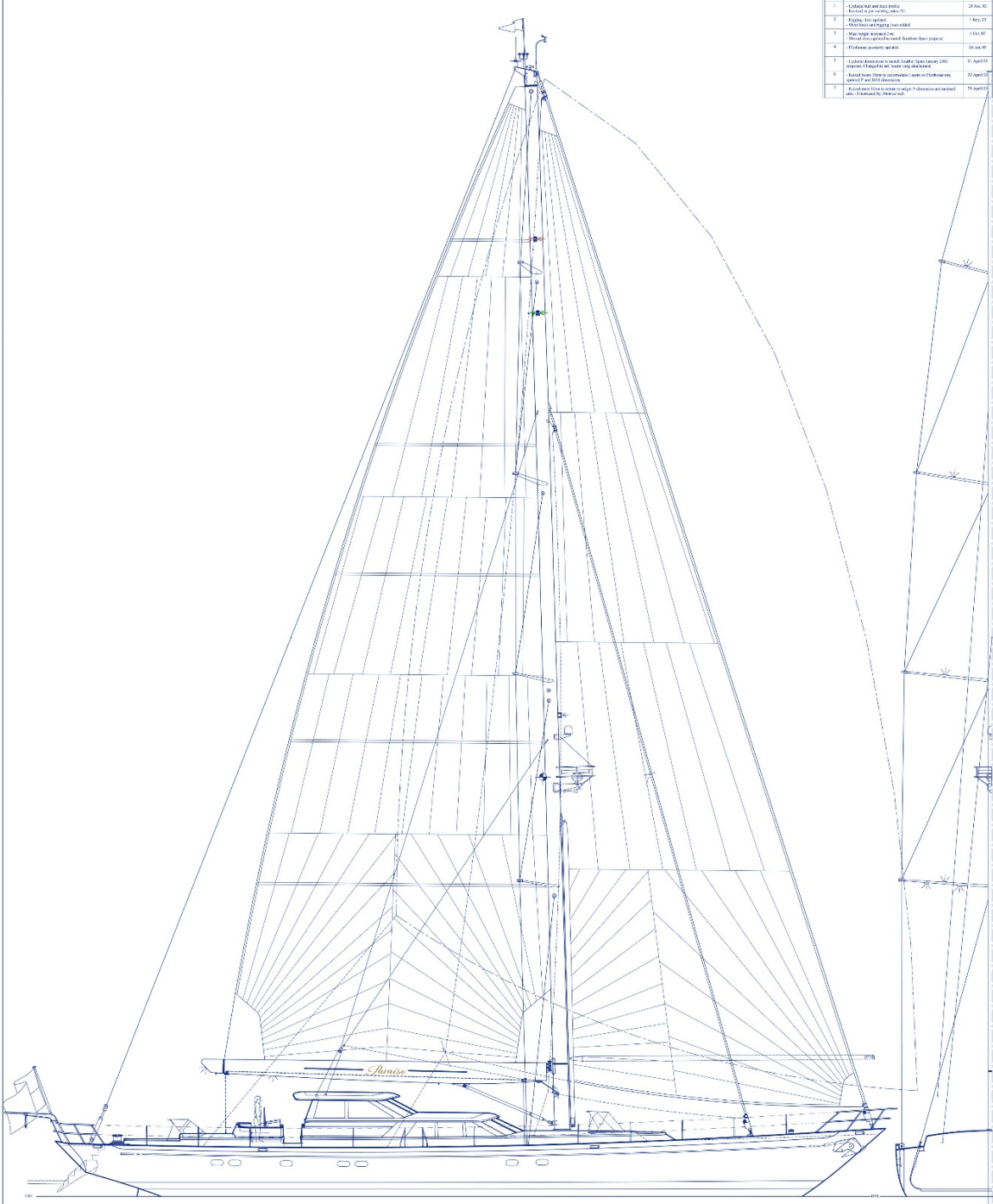
FONTAINE DESIGN GROUP
DESIGNERS OF THE WORLD'S MOST ADVANCED RACING YACHTS

SAIL PLAN
J. TAYLOR

NO. 100
 DATE: 10/15/10
 SCALE: 1:100
 SHEET NO. 101

THIS DRAWING IS THE PROPERTY OF FONTAINE DESIGN GROUP AND IS NOT TO BE REPRODUCED OR TRANSMITTED IN ANY FORM OR BY ANY MEANS, ELECTRONIC OR MECHANICAL, INCLUDING PHOTOCOPYING, RECORDING, OR BY ANY INFORMATION STORAGE AND RETRIEVAL SYSTEM, WITHOUT THE WRITTEN PERMISSION OF FONTAINE DESIGN GROUP. THIS DRAWING IS THE PROPERTY OF FONTAINE DESIGN GROUP AND IS NOT TO BE REPRODUCED OR TRANSMITTED IN ANY FORM OR BY ANY MEANS, ELECTRONIC OR MECHANICAL, INCLUDING PHOTOCOPYING, RECORDING, OR BY ANY INFORMATION STORAGE AND RETRIEVAL SYSTEM, WITHOUT THE WRITTEN PERMISSION OF FONTAINE DESIGN GROUP.

REVISIONS		
No.	DESCRIPTION	DATE
0	Issue for construction	10/15/10
1	Issue for construction	10/15/10
2	Issue for construction	10/15/10
3	Issue for construction	10/15/10
4	Issue for construction	10/15/10
5	Issue for construction	10/15/10
6	Issue for construction	10/15/10
7	Issue for construction	10/15/10



HULL LINES

DATE	NO.	REV.	BY	CHK.
2014.05.01	100	1	J. TAYLOR	
2014.05.01	100	2	J. TAYLOR	
2014.05.01	100	3	J. TAYLOR	
2014.05.01	100	4	J. TAYLOR	
2014.05.01	100	5	J. TAYLOR	

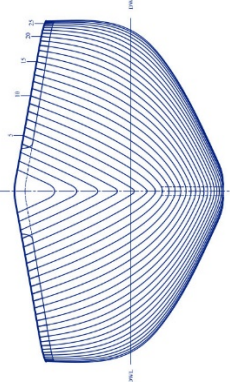
PRINCIPAL DIMENSIONS

Overall Length	102' 0"	31.08 m
Waterline Length	98' 0"	29.91 m
Beam	27' 0"	8.23 m
Beam at Deck	27' 0"	8.23 m
Beam at Keel	27' 0"	8.23 m
Depth	11' 0"	3.35 m
Displacement (Est.)	115,000 kg	
Displacement (Max)	145,000 kg	
Displacement (Min)	85,000 kg	
Block Coefficient	0.75	
Prismatic Coefficient	0.85	
Wetted Surface Area	2,500 sq. ft.	232 sq. m
Wetted Surface Area	2,500 sq. ft.	232 sq. m
Wetted Surface Area	2,500 sq. ft.	232 sq. m

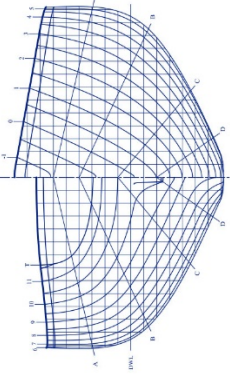
REVISIONS

NO.	DESCRIPTION	DATE
1	Issue for review	2014.05.01
2	Issue for review	2014.05.01
3	Issue for review	2014.05.01
4	Issue for review	2014.05.01
5	Issue for review	2014.05.01

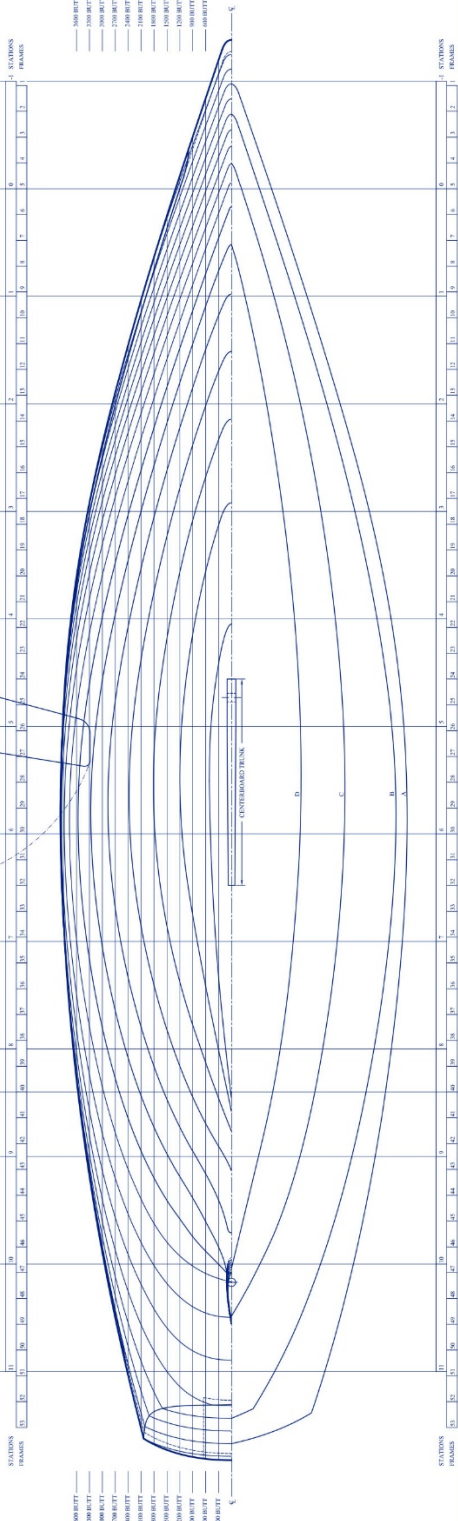
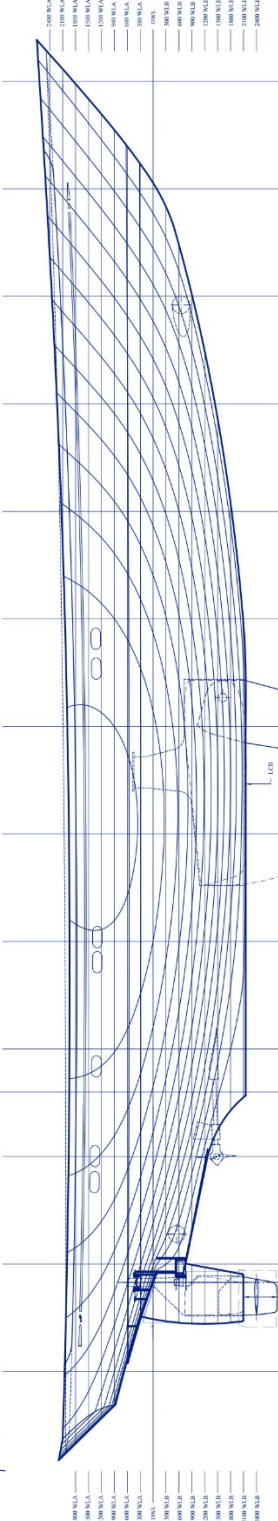
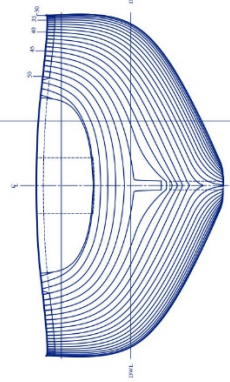
FWD FRAMES



STATIONS



AFT FRAMES



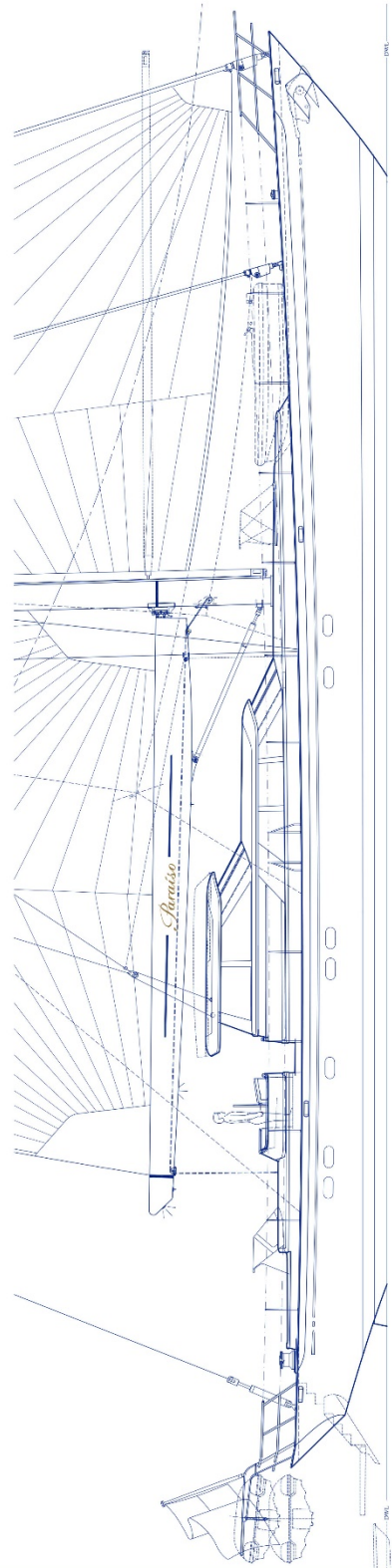
Scale: 1/4" = 1'-0"

DECK PLAN AND PROFILE

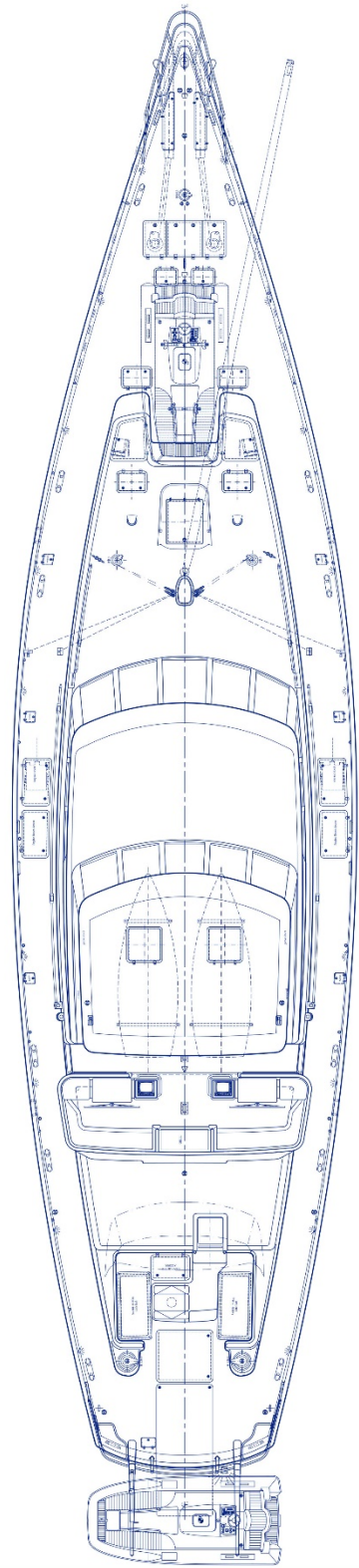
J. TAYLOR
 DATE: 01/15/2019
 DRAWN BY: J. TAYLOR
 CHECKED BY: J. TAYLOR
 PROJECT: 19-001-001
 SHEET: 101 OF 101
 SCALE: AS SHOWN
 PROJECT LOCATION: 10000 10th Avenue, Suite 100, San Diego, CA 92121

NO.	DESCRIPTION	LOCATION	MARKET
1	Deck	Deck	Deck
2	Deck	Deck	Deck
3	Deck	Deck	Deck
4	Deck	Deck	Deck
5	Deck	Deck	Deck
6	Deck	Deck	Deck
7	Deck	Deck	Deck
8	Deck	Deck	Deck
9	Deck	Deck	Deck
10	Deck	Deck	Deck
11	Deck	Deck	Deck
12	Deck	Deck	Deck
13	Deck	Deck	Deck
14	Deck	Deck	Deck
15	Deck	Deck	Deck
16	Deck	Deck	Deck
17	Deck	Deck	Deck
18	Deck	Deck	Deck
19	Deck	Deck	Deck
20	Deck	Deck	Deck
21	Deck	Deck	Deck
22	Deck	Deck	Deck
23	Deck	Deck	Deck
24	Deck	Deck	Deck
25	Deck	Deck	Deck
26	Deck	Deck	Deck
27	Deck	Deck	Deck
28	Deck	Deck	Deck
29	Deck	Deck	Deck
30	Deck	Deck	Deck
31	Deck	Deck	Deck
32	Deck	Deck	Deck
33	Deck	Deck	Deck
34	Deck	Deck	Deck
35	Deck	Deck	Deck
36	Deck	Deck	Deck
37	Deck	Deck	Deck
38	Deck	Deck	Deck
39	Deck	Deck	Deck
40	Deck	Deck	Deck
41	Deck	Deck	Deck
42	Deck	Deck	Deck
43	Deck	Deck	Deck
44	Deck	Deck	Deck
45	Deck	Deck	Deck
46	Deck	Deck	Deck
47	Deck	Deck	Deck
48	Deck	Deck	Deck
49	Deck	Deck	Deck
50	Deck	Deck	Deck
51	Deck	Deck	Deck
52	Deck	Deck	Deck
53	Deck	Deck	Deck
54	Deck	Deck	Deck
55	Deck	Deck	Deck
56	Deck	Deck	Deck
57	Deck	Deck	Deck
58	Deck	Deck	Deck
59	Deck	Deck	Deck
60	Deck	Deck	Deck
61	Deck	Deck	Deck
62	Deck	Deck	Deck
63	Deck	Deck	Deck
64	Deck	Deck	Deck
65	Deck	Deck	Deck
66	Deck	Deck	Deck
67	Deck	Deck	Deck
68	Deck	Deck	Deck
69	Deck	Deck	Deck
70	Deck	Deck	Deck
71	Deck	Deck	Deck
72	Deck	Deck	Deck
73	Deck	Deck	Deck
74	Deck	Deck	Deck
75	Deck	Deck	Deck
76	Deck	Deck	Deck
77	Deck	Deck	Deck
78	Deck	Deck	Deck
79	Deck	Deck	Deck
80	Deck	Deck	Deck
81	Deck	Deck	Deck
82	Deck	Deck	Deck
83	Deck	Deck	Deck
84	Deck	Deck	Deck
85	Deck	Deck	Deck
86	Deck	Deck	Deck
87	Deck	Deck	Deck
88	Deck	Deck	Deck
89	Deck	Deck	Deck
90	Deck	Deck	Deck
91	Deck	Deck	Deck
92	Deck	Deck	Deck
93	Deck	Deck	Deck
94	Deck	Deck	Deck
95	Deck	Deck	Deck
96	Deck	Deck	Deck
97	Deck	Deck	Deck
98	Deck	Deck	Deck
99	Deck	Deck	Deck
100	Deck	Deck	Deck

NO.	DESCRIPTION	DATE
1	Initial Design	01/15/2019
2	Revised Design	01/15/2019
3	Final Design	01/15/2019



STATION FRAMES 1 2 3 4 5 6 7 8 9 10 11 12 13 14 15 16 17 18 19 20 21 22 23 24 25 26 27 28 29 30 31 32 33 34 35 36 37 38 39 40 41 42 43 44 45 46 47 48 49 50 51 52 53 54 55 56 57 58 59 60 61 62 63 64 65 66 67 68 69 70 71 72 73 74 75 76 77 78 79 80 81 82 83 84 85 86 87 88 89 90 91 92 93 94 95 96 97 98 99 100



STATION FRAMES 1 2 3 4 5 6 7 8 9 10 11 12 13 14 15 16 17 18 19 20 21 22 23 24 25 26 27 28 29 30 31 32 33 34 35 36 37 38 39 40 41 42 43 44 45 46 47 48 49 50 51 52 53 54 55 56 57 58 59 60 61 62 63 64 65 66 67 68 69 70 71 72 73 74 75 76 77 78 79 80 81 82 83 84 85 86 87 88 89 90 91 92 93 94 95 96 97 98 99 100

