



FONTAINE DESIGN GROUP
CABOCHON



CABOCHON UNDER SAIL OFF NEWPORT 2023

FONTAINE YACHT HOLDINGS LLC
92 Maritime Drive, Portsmouth, RI 02871 USA
Tel: +1 (401) 241-0673, Email: ted@fontainedesigngroup.com
www.fontainedesigngroup.com

SPECIFICATIONS FOR *CABOCHON*

Make:	HOOD / FONTAINE	Boat Name:	CABOCHON
Model:	Custom Pilothouse Cutter	Hull Material:	Fiberglass
Length:	92 ft	Draft:	7 ft 6 in
Price:	\$ 1,875,000	Number of Engines:	1
Year:	2004	Fuel Type:	Diesel
Condition:	Used	Number:	3900281
Location:	Portsmouth, R.I.	Sleeps:	8/4
		Price:	\$1,875,000.00



CABOCHON

Custom built for an experienced yachtsman and designed by Ted Hood / Ted Fontaine, *CABOCHON's* stout construction, world-class features and attention to detail are evident everywhere. From her practical engineering and redundant systems to beautifully book-matched teak joinery and dovetailed drawers. *CABOCHON* is remarkable in that she brings so many desirable features with her shallow draft hull form with a board up draft of only 6'6" and board down draft of 18', *CABOCHON* is renowned for her sparkling performance under sail and comfort at sea, to name a few — together all in one beautiful vessel.

CABOCHON has just received a major refit where nothing was left untouched. Never so "dialed in" with brand new hull Awlgrip paint and all systems having been inspected and gone through she is ready to cruise anywhere, immediately. Besides the (2021) paint job, nearly everything aboard is now fresh — all new sails (2023), rigging, electronics, entertainment systems, exterior and interior soft goods, mechanical service, air conditioning system, hydraulic system, helm station controls, exterior canvas, tender, etc. Construction is fiberglass with laminates of Kevlar for strength and rigidity. With her Hood/Fontaine low-wetted surface hull form, there is unparalleled volume below decks.

CABOCHON's spacious accommodations and living space are rarely found in a sailboat of her size, especially one that sails like her and that captures the eye with such flowing and beautiful lines.

She is US duty paid, MECAL approved, and recently commercially registered to allow for a charter program (although never chartered thus far), **CABOCHON** will continue to turn heads worldwide, no matter where she is sailing, and is currently offered at an exceptional value.



MEASUREMENTS

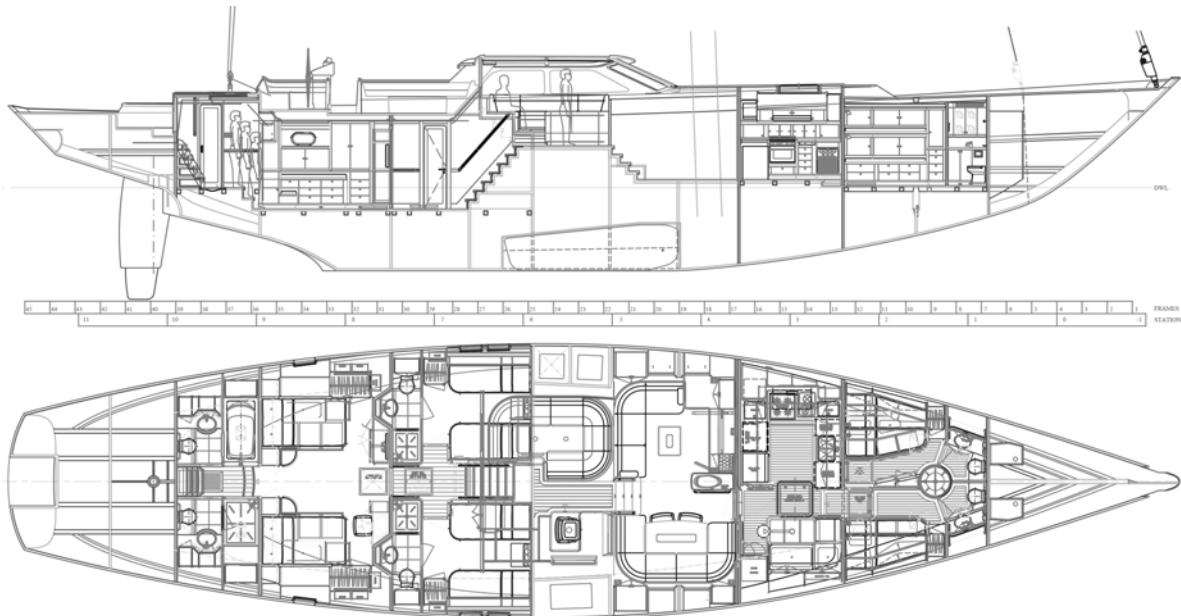
Cruising Speed:	11 kn	Displacement:	198000 Lbs.
Max Speed:	12 kn	Life raft Capacity:	12
Range:	5000 nmi	Fuel Capacity:	2000 Gal
LOA:	92 ft	Water Capacity:	1000 Gal
LWL:	71 ft	Number of Cabins:	5
Beam:	21 ft 10 in	Number of Heads:	6
Max Draft:	7 ft 6 in		
Ballast:	60000 Lbs.		

PROPULSION

Engine Make:	John Deere	Engine Model:	6090SFM75
Engine Year:	2013	Hours:	1009
Primary Engines:	Inboard	Power:	375 hp

ACCOMODATIONS

CABOCHON has accommodations for six adults and two children in the owner's party, with three large private staterooms aft, split level dining/lounge areas amidships, plus two in-suite cabins forward of the galley for crew. Joinery is finely crafted Scandinavian style teak with a gloss varnish finish. Major interior refit in 2019 including, but not limited to all new soft goods, lighting fixtures, satellite TV system & TVs, Wi-Fi system, Sonos audio system, and removable carpeting throughout, head fixtures, etc.



PILOTHOUSE

The large pilothouse, originally designed for inclement weather, has quickly become the center of activity aboard CABOCHON. It is light and airy with excellent visibility all around. To port is a U-shaped settee and teak table that seats six, great for informal meals, cocktails or just planning the day's activities. Built into the centerline settee one will find ample drawers for dishware and cutlery as well as longer drawers for ocean charts and ships files.

The port side dining area is ideal for lounging in inclement weather, the visibility aft to the cockpit and forward through the tempered safety glass windows is superb. There is a direct line of sight from the pilothouse seating area aft to the helm and forward to the boat that is unprecedented in a sailing yacht of this size.

To starboard and forward is the navigation area with throttle and autopilot control, complete with all electronics, nav table and helmsman's seat. Aft of the nav area is a wet bar and coffee machine. The entire pilothouse arrangement is designed for safe seaworthy passages as it is for formal dining and entertaining. Truly one of the primary focal points of the yacht.



MASTER STATE ROOM

Entered from the pilothouse down full-sized easy-access stairs and hallway, the master stateroom aft has 1 king (new, 2019) and 1 queen sized berth, port and starboard, a makeup area, two cedar-lined hanging lockers, plenty of storage space and his and hers bathrooms, Port head features a bathtub while the starboard head features an enclosed shower. Opening portholes for ventilation and deck prisms for additional natural light. LCD TV with high-definition satellite and Sonos system (2018). Aft, a centerline vestibule leads to a private aft cockpit.



FONTAINE YACHT HOLDINGS LLC
92 Maritime Drive, Portsmouth, RI 02871 USA
Tel: +1 (401) 241-0673, Email: ted@fontainedesigngroup.com
www.fontainedesigngroup.com

GUEST STATE ROOMS

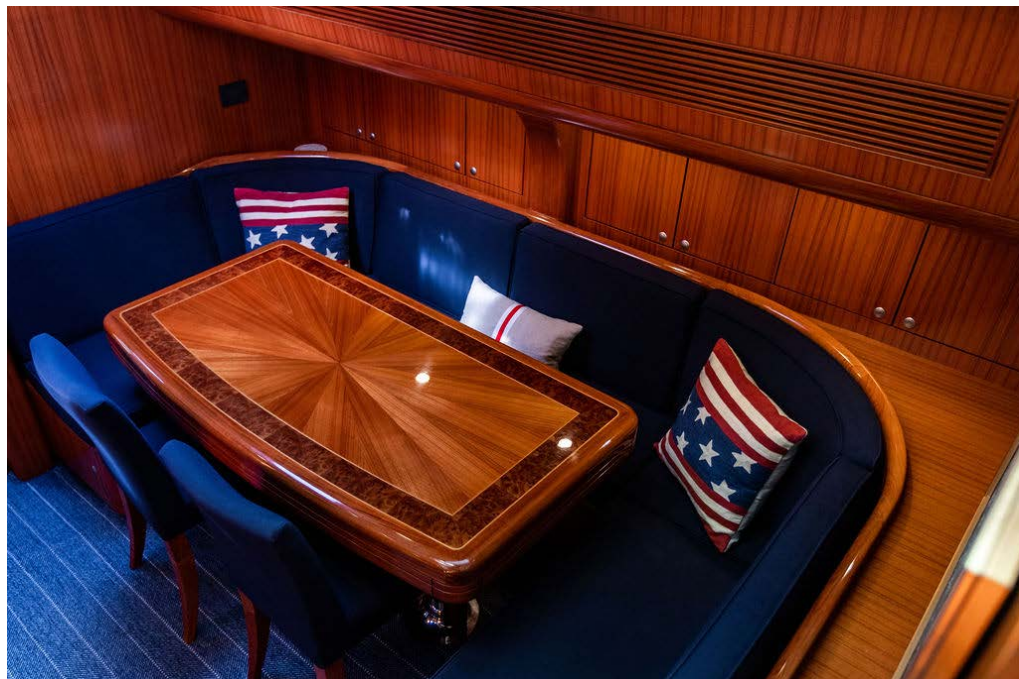
Forward of the master stateroom and separated by a passageway are two guest staterooms, each with en-suite head and stall shower. Both guest staterooms have two twin beds, plus fold-away Pullman berths for children. Both cabins have fillers for the twin beds which convert them to single queens (new 2019) Both cabins have cedar-lined hanging lockers, plenty of storage spaces, two opening portholes for ventilation and deck prisms for additional natural light. LCD TVs with high-definition satellite and Sonos system (2018)



FONTAINE YACHT HOLDINGS LLC
92 Maritime Drive, Portsmouth, RI 02871 USA
Tel: +1 (401) 241-0673, Email: ted@fontainedesigngroup.com
www.fontainedesigngroup.com

MAIN SALON

The full-beam salon is open to the pilothouse salon, so that the pilothouse windows reach over 50 percent of the salon. Two hatches provide abundant natural light in the salon, To starboard there is a dining area for eight. To port is an L-shaped couch with coffee table and a 40" LCD TV with high definition satellite, DVD, and Sonos system (2018), In addition to ample dry storage, there is a built-in wine rack, refrigerator and ice maker (new 2015).



GALLEY

Forward of the main salon, through a sliding teak door and a watertight MCA door, is the large, modern, U-shaped galley and crew mess. The fully-equipped galley has a large hatch for light and/or fresh air while at anchor, so the running of A/C (new 2019) is often an elective. There are multiple freezer compartments to support "around-the-world" adventuring.

- Broadwater 4-burner propane stove and oven (new propane tanks, 2019)
- KitchenAid cook top
- KitchenAid microwave oven (new 2020)
- KitchenAid dishwasher (new 2016)
- KitchenAid trash compactor
- Sub Zero vertical refrigerator with (2) bottom drawers
- Sub Zero (2) freezer drawers
- Lift-up under-counter freezer compartment outboard (D.C.) (new 2013)
- Sub-sole freezer compartment (D.C.) (new 2013)
- Miscellaneous small appliances
- Extractor fan and lighting over stove
- Double stainless steel sinks with retractable faucet (new 2013)
- Corian countertops
- Cork flooring with full carpet (new 2019)



CREW ACCOMODATIONS

Two double crew cabins are located forward of the galley. Each cabin has its own sink and toilet and shares a centrally located shower.

The crew mess is equipped with its own entertainment center, including LCD TV (new 2018), with High Def Satellite, Sonos. The Miele washer (new 2015) and Miele dryer are located beside the crew mess for easy access.





COCKPITS

Aft of the pilothouse is a large cockpit protected by a rigid bimini top and dodger (both new 2019) for maximum comfort. There is a U-shaped seating area to port with a teak table that opens for cocktails or on-deck dining. Opposite to starboard is an L-shaped seating area with an additional teak table. Blue cushions with white piping (new 2020 Ask Mads) complement the “Whisper Gray” Awlgrip house. Awl Brite finished teak trim and teak deck. In the cockpit there is a top-loading refrigerator to port of the pilothouse companionway and cabinet space to starboard.



Aft of the cockpit area is the raised helm area. A U-shaped settee surrounds the 4.5-foot wheel and pedestal, which accommodates navigational instruments, compass, engine controls and toggle controls for easy command and control of all sail handling. CABOCHON can literally be sailed by just one person without leaving the helm. On the aft deck, there is a private owners' cockpit and hydraulic swim platform for easy access to and from the water.



ELECTRONICS AND NAVIGATION EQUIPMENT

Electronics package updated in 2020.

FONTAINE YACHT HOLDINGS LLC
92 Maritime Drive, Portsmouth, RI 02871 USA
Tel: +1 (401) 241-0673, Email: ted@fontainedesigngroup.com
www.fontainedesigngroup.com

4x Zeus3 16" Displays, 1 Zeus3 &" Display, Precision 9 Compass (2023), H5000 Wind/Depth Processor, 4 20/20 displays, 4 Triton 2 displays, NAIS 500. Simrad Autopilot. B&G V50 VHF with 3 remote handsets. Kahlenberg Air Horn with M511A Whistle Control.

Starlink installed 2023.

Navigation and communications equipment is MCA- and Global Maritime Distress and Safety System (GMDSS) compliant.

- B&G Hercules 2000 system with Performance Processor, (2) FFDs, (4) 20/20 displays, 360 wind, magnified wind, rudder angle, speed sensor, depth sensor and inclinometer.
- Hercules 2000 Pilot with (2) stations and one remote control. Running either of Gyro or of B&G compass
- Simrad GN33 SDGPS
- Simrad GN54 15" color chart plotter/ radar/ SDGPS/depth sounder with 10" sun view full-function remote at helm station.
- Simrad RA42 color radar with ARPA function
- Navtex NX-300 receiver
- SSB-GMDSS compliant Skanti TRP1150 DSC with SCS PTC-II Pro modem
- VHF - DSC – GMDSS
- (1) RS8400 – GMDSS
- (1) Class B DSC controller for RS8400
- (1) RS87 VHF with active handset
- (1) Additional active handset for RS87 SAT-Com
- (1) Thrane & Thrane TT-3020C w/GPS
- (1) Nera world phone Marine mini-M
- KVH G6 satellite TV
- Fish Finder Furuno FCV-600L installed in dinghy
- Weather Station Oceans SeaStation 2000 Micro
- Weather Fax
- EPIRB ACR GlobalFix 406 Category 1
- Computer Systemax with Nobeltec
- Weather Works (weather radar, satellite, wind-, wave forecast etc.)

HYDRAULICS AND DECK EQUIPMENT

The ship's hydraulics are an integrated system designed by Maxpower, the system allows the functions to be powered by three sources: Maxpower DC-pump or (2) Rexroth Genset driven PTO's. The entire system was completely rebuilt in 2019 including an entirely new centerboard ram.

- New hydraulic manifold and all hoses (2019)
- Backstay hydraulics overhauled (2019)
- Centerboard hydraulic ram (2019)

DECK EQUIPMENT

- 81 Kg polished stainless steel CQIR anchor with 450' galvanized all chain rode (all new, 2019)
- 63 Kg polished stainless steel Delta anchor (new, 2019) with 350' re-galvanized (2019) all chain rode
- Fortress anchor, 3 piece
- Muir hydraulic windlasses mounted under hatch (both rebuilt 2019)
- Solimar flush hatches with solid teak rims (Removed, rebuilt, refinished, & re-installed all deck hatches (2019)
- Teak decks (re-caulked} 2021)
- Teak bow seat
- Teak stern seats
- Dinghy lift aluminum davits with hydraulic function (rebuilt, 2019)
- Spectra line for davits (2019)
- Hydraulic stern stairs and teak boarding platform
- Hot and cold shower, at stairs
- (8) Deck prisms
- Sturdy, rigid bimini, dodger and connective piece
- Viking 8-person Solas life raft (new 2015)
- Full list of safety gear
- Ch New hydraulic manifold and all hoses (2019)
- Backstay hydraulics overhauled (2019)
- Centerboard hydraulic ram (2019) chocks on foredeck for dinghy, as well as davits on the stern
- Tender chocks and custom lifting system for on deck storage including new lifting boom (2019)
- New fire alarm system in 2014, and completely overhauled in 2019
- Fire extinguishers (new 2015)
- Life lines (new 2015)
- Viking 8UKL 8 Man liferaft 2015, Revere 4P Solas A Lifteraft 2023
- Full list of safety gear
- Chocks on foredeck for dinghy, as well as davits on the stern 2010.

TENDER

14'-11" center console, hard bottom Novurania inflatable including fish finder with depth sounder and nav-lights. New inflatable pontoons, new seats, new steering 2013. Yamaha 60HP 4-stroke outboard engine (overhauled 2011, new carburetor, new lifting motor etc.) New prop 2013.



SAILS AND RIGGING

Unlike most boats of her size, *CABOCHON* is easily sailed shorthanded with "big boat" systems such as captive winches and hydraulic furling - all sails can be deployed, trimmed, and furled by 1 person from the helm pedestal, Also unlike boats of her size that are commonly made of steel or aluminum, her hull is fiberglass with layers of Kevlar for strength and rigidity.

World-renowned French Lorimar Carbon Fiber mast with 4 spreaders and in-mast furling, "Whisper Gray" Awlgrip.

Spectra running rigging (mainsheet, outhaul and genoa sheets, new 2012).

Rig pulled and fully inspected (2021)

All rigging removed and fully inspected (2021)

Stripped and completely re-wired (Spring, 2018)

- World-renowned French Lorimar Carbon Fiber mast with 4 spreaders and furling, "Whisper Gray"
- Awlgrip (painted, 2015)
- Spreader lights (2019)
- Navtec rigging and hydraulics
- Backstay hydraulic cylinders rebuilt (2019)
- Hydraulic boom vang (rebuilt vang cylinder, 2021)
- Rod rigging (new 2015)
- Mast partner with Spartite (new 2015)

- Spectra running rigging (2019)

Sails:

- North in mast furling mainsail (new 2023)
- North furling staysail (new 2023)
- North furling genoa (new 2023)
- 204 ft. 2 two-ply Storm Orange Dacron storm (Halsey Lidgard)
- 527 ft. 2 two-ply Storm Orange Dacron trysail (Halsey Lidgard)

Captive Winches:

- (4) Nielson (Harken) for genoa and staysail sheets
- Magic Trim for mainsheet
- Magic Trim in boom for outhaul

Deck Winches:

- (2) Harken 3-speed MPS/running backstay
- (2) Harken 2-speed halyard/mast winches
- Harken foredeck winch

Furling Gear:

- Reckmann for main, staysail and headstay (both headsail furlers completely rebuilt, 2021)
- All sail handling is fingertip controlled via toggles located at the helm station (completely rebuilt and redesigned in 2019)

ENTERTAINMENT SYSTEM

- 40" LCD in salon (new, 2018)
- 30" LCD in master stateroom (new, 2018)
- 24" LCD in crew mess (new, 2018)
- High Definition Satellite TV system (new, 2018)
- Wi-Fi system (new, 2018)
- Sonos audio system (new, 2018)
- Surround sound in salon with additional speakers in pilothouse, cockpit and aft cockpit
- Separate system in master stateroom

ELECTRICAL SYSTEM

- (2) Northern Lights 1800 RPM generators 25 kW — (Port gen.@ 7654 hrs] Stbd. gen @ 7676 hrs.). Major service including new heat exchangers, injectors rebuilt, raw water pumps, new hoses (2021)
- 2000 Ah Mastervolt batteries (new 2015)
- Mastervolt 3x100A and Ix40A charging system (new 2019)
- 300A Electrodyne alternator on main engines including (1) spare
- single phase IOOA Shore Power with transformer
- Cable Master to store 90' cable (new '2016)
- 4 kW inverter for house bank (new 2019) and 25 kW Mastervolt inverter for nav station (new 2019)

HULL AND CONSTRUCTION

The hull is built with composite material and a sandwich structure using Core-cell foam core. An additional five layers of Kevlar were incorporated for extra strength. The deck and pilothouse are also sandwich construction with E-glass. Centerboard configuration offers minimum draft of 6'-6" with board up and a maximum draft of 18' with board down, New rudder bearings (2013/2016). New bottom paint (2021).

Classification:

Lloyd's Construction Hull Certificate

MECAL Certificate (2019)

- "Midnight Blue" Awlgrip hull (2021) with varnished teak exterior trim
- "Light Gray" Awlgrip nonskid (2015)
- "Whisper Gray" Awlgrip house (2015)
- Integral rub rail with a stainless-steel striker
- (4) Watertight bulkheads
- New teak cap rail with (16) coats of varnish 2017, routinely maintained with two coats annually.

ENGINE AND MECHANICAL EQUIPMENT

Large well-laid-out engine room (new paint 2015 and partially repainted in 2019) with easy access to all pumps and power, stand-up headroom next to main engine.

(2013) John Deere 6-cylinder Model 6090SFM75, 375 hp engine main engine (612 hours) turbocharger and heat exchangers overhauled in 2019.

- 90 cm 3-blade Maxprop propeller
- Max Power 35 hp bow thruster (new, 2019)
- Chilled water Marine Air air conditioning (entire system new, 2019)
- New chillers, air handlers, ductwork
- Fire suppression system in engine room (new, 2019)
- Eberspacher diesel heater system (entire system new, 2019)
- Sea Recovery water maker, 60 gallons/h 110 VAC
- Sea Recovery water maker 8 gallons/h 24V DC
- Isotherm water heaters (new 2011)
- Fresh Water pumps (new 2019)
- Fuel polishing system (new 2014)
- Fuel shut off system (new, 2019)
- Shaft seal (new 2015)

Highfield 13' center console inflatable hard bottom tender with 70-hp Yamaha outboard engine (2016)

MAST / RIGGING

Rig pulled and fully inspected (2021)

All rigging removed and fully inspected (2021)
Stripped and completely re-wired (Spring, 2018)

- World-renowned French Lorimar Carbon Fiber mast with 4 spreaders and furling, "Whisper Gray"
- Awlgrip (painted, 2015)
- Spreader lights (2019)
- Navtec rigging and hydraulics
- Backstay hydraulic cylinders rebuilt (2019)
- Hydraulic boom vang (rebuilt vang cylinder, 2021)
- Rod rigging (new 2015)
- Mast partner with Spartite (new 2015)
- Spectra running rigging (2019)

SAILS

- 1,944 sq. ft. North Spectra mainsail (new 2023)
- 828 sq. ft. North Spectra (new 2023)
- 2,583 sq. ft. North Spectra genoa (new 2023)
- 5,346 sq. ft. PCS spinnaker
- 204 sq. ft. two-ply Storm Orange Dacron storm (Halsey Lidgard)
- 527 sq. ft. two-ply Storm Orange Dacron trysail (Halsey Lidgard)

CAPTIVE WINCHES

- (4) Nielson (Harken) for genoa and staysail sheets
- (1) Magic Trim for mainsheet
- (1) Magic Trim in boom for outhaul

DECK WINCHES

- (2) Harken 3-speed MPS/running backstay ALL winches full service 2023
- (2) Harken 2-speed halyard/mast winches
- (1) Harken foredeck winch

FURLING GEAR

- Reckmann for main, staysail and headstay (serviced in 2020)
- All sail handling is fingertip controlled via toggles located at the helm station.

REMARKS

Built for an experienced yachtsman, and launched in December 2004, CABOCHON's stout construction, world-class features and attention to detail are evident everywhere, from robust practical engineering and redundant systems to beautifully book-matched teak

joinery and dovetailed drawers. CABOCHON is remarkable in that it brings so many desirable features –

Shoal Draft (draft w/ board up = 7' 6"; w/ board down = 18'), performance under sail and comfort at sea, to name a few – together all in one beautiful vessel.

Exceptional Value – inspection highly recommended.

DISCLAIMER

The Company offers the details of this vessel in good faith but cannot guarantee or warrant the accuracy of this information nor warrant the condition of the vessel. A buyer should instruct his agents, or his surveyors, to investigate such details as the buyer desires validated. This vessel is offered subject to prior sale, price change, or withdrawal without notice.

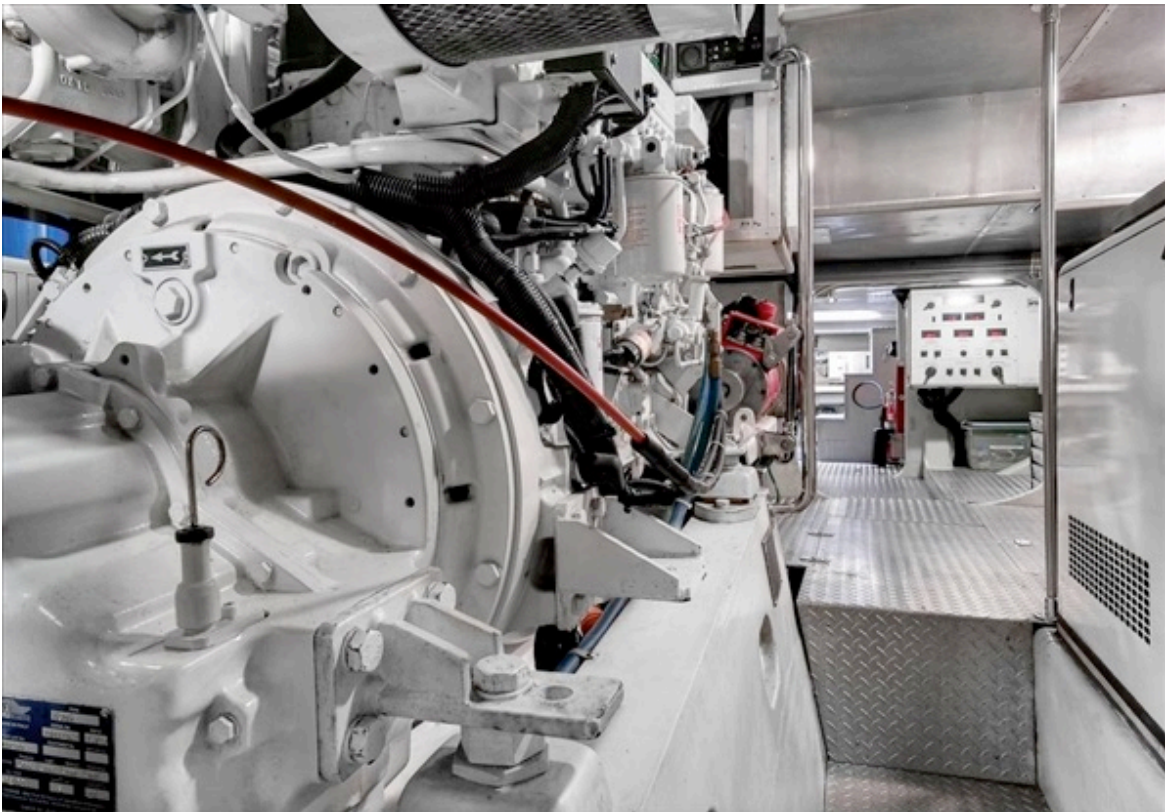




FONTAINE YACHT HOLDINGS LLC
92 Maritime Drive, Portsmouth, RI 02871 USA
Tel: +1 (401) 241-0673, Email: ted@fontainedesigngroup.com
www.fontainedesigngroup.com



FONTAINE YACHT HOLDINGS LLC
92 Maritime Drive, Portsmouth, RI 02871 USA
Tel: +1 (401) 241-0673, Email: ted@fontainedesigngroup.com
www.fontainedesigngroup.com



FONTAINE YACHT HOLDINGS LLC
92 Maritime Drive, Portsmouth, RI 02871 USA
Tel: +1 (401) 241-0673, Email: ted@fontainedesigngroup.com
www.fontainedesigngroup.com



FONTAINE YACHT HOLDINGS LLC
92 Maritime Drive, Portsmouth, RI 02871 USA
Tel: +1 (401) 241-0673, Email: ted@fontainedesigngroup.com
www.fontainedesigngroup.com



FONTAINE YACHT HOLDINGS LLC
92 Maritime Drive, Portsmouth, RI 02871 USA
Tel: +1 (401) 241-0673, Email: ted@fontainedesigngroup.com
www.fontainedesigngroup.com



FONTAINE YACHT HOLDINGS LLC
92 Maritime Drive, Portsmouth, RI 02871 USA
Tel: +1 (401) 241-0673, Email: ted@fontainedesigngroup.com
www.fontainedesigngroup.com



FONTAINE YACHT HOLDINGS LLC
92 Maritime Drive, Portsmouth, RI 02871 USA
Tel: +1 (401) 241-0673, Email: ted@fontainedesigngroup.com
www.fontainedesigngroup.com



FONTAINE YACHT HOLDINGS LLC
92 Maritime Drive, Portsmouth, RI 02871 USA
Tel: +1 (401) 241-0673, Email: ted@fontainedesigngroup.com
www.fontainedesigngroup.com



FONTAINE YACHT HOLDINGS LLC
92 Maritime Drive, Portsmouth, RI 02871 USA
Tel: +1 (401) 241-0673, Email: ted@fontainedesigngroup.com
www.fontainedesigngroup.com



FONTAINE YACHT HOLDINGS LLC
92 Maritime Drive, Portsmouth, RI 02871 USA
Tel: +1 (401) 241-0673, Email: ted@fontainedesigngroup.com
www.fontainedesigngroup.com



FONTAINE YACHT HOLDINGS LLC
92 Maritime Drive, Portsmouth, RI 02871 USA
Tel: +1 (401) 241-0673, Email: ted@fontainedesigngroup.com
www.fontainedesigngroup.com



FONTAINE YACHT HOLDINGS LLC
92 Maritime Drive, Portsmouth, RI 02871 USA
Tel: +1 (401) 241-0673, Email: ted@fontainedesigngroup.com
www.fontainedesigngroup.com

